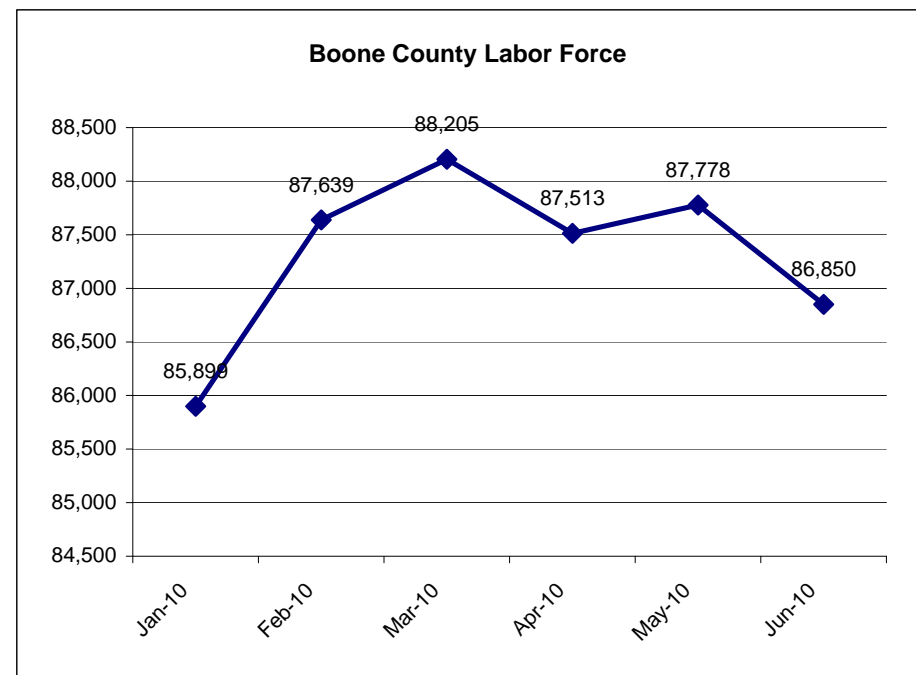
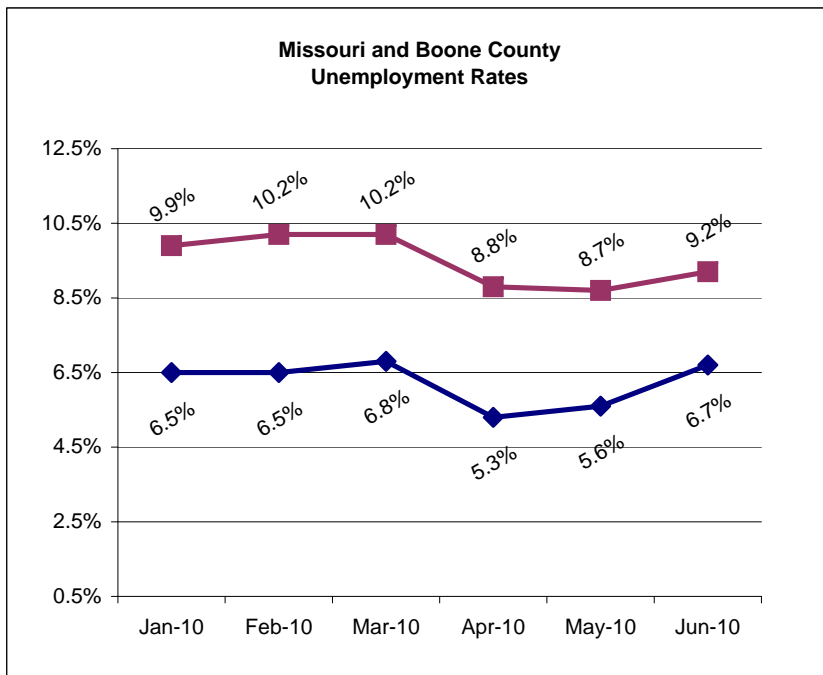


UNEMPLOYMENT	Jan-10	Feb-10	Mar-10	Apr-10	May-10	Jun-10
United States	10.6%	10.4%	10.2%	9.5%	9.3%	9.6%
Missouri	9.9%	10.2%	10.2%	8.8%	8.7%	9.2%
Boone County	6.5%	6.5%	6.8%	5.3%	5.6%	6.7%
Columbia (city)	5.6%	5.5%	6.0%	4.7%	5.1%	6.3%
Columbia MSA	6.6%	6.6%	6.9%	5.4%	5.7%	6.8%

LABOR FORCE	Jan-10	Feb-10	Mar-10	Apr-10	May-10	Jun-10
United States	152,957,000	153,194,000	153,660,000	153,911,000	153,866,000	154,767,000
Missouri	2,966,838	2,978,529	2,981,946	2,991,615	2,999,371	3,036,780
Boone County	85,899	87,639	88,205	87,513	87,778	86,850
Columbia (city)	55,635	56,679	57,165	56,822	57,050	56,545
Columbia MSA	90,986	92,844	93,436	92,667	92,969	91,969



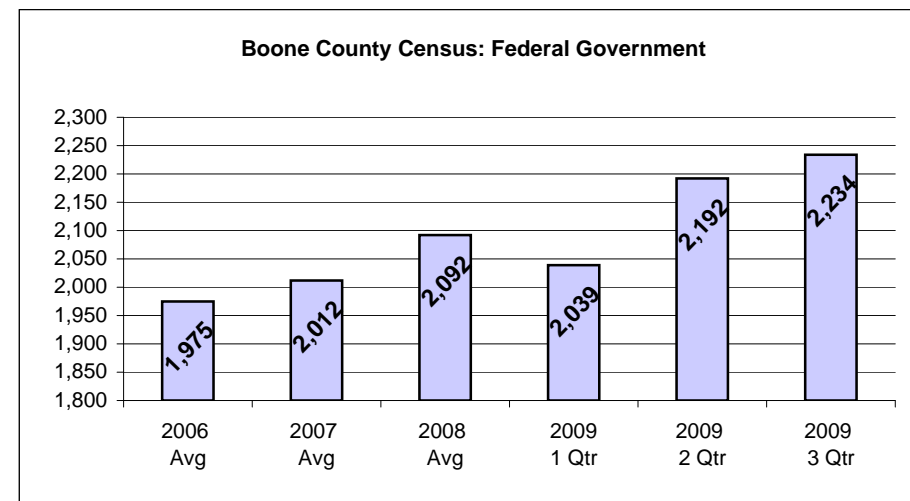
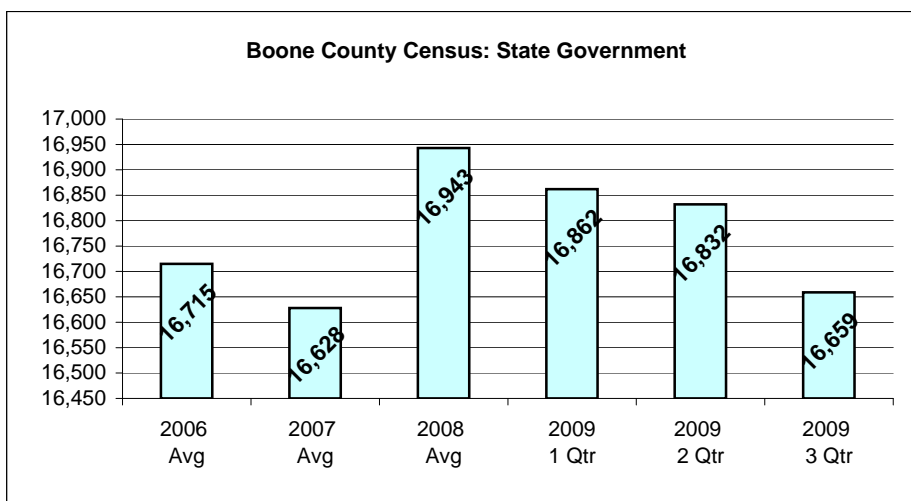
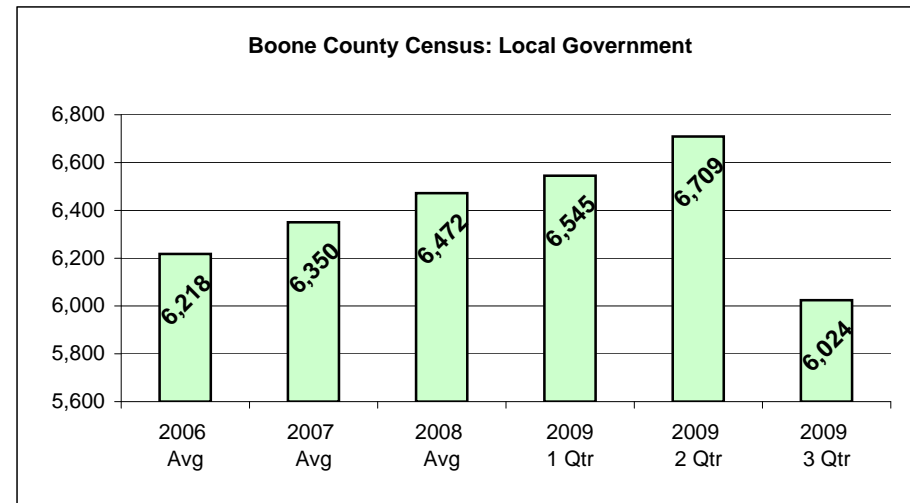
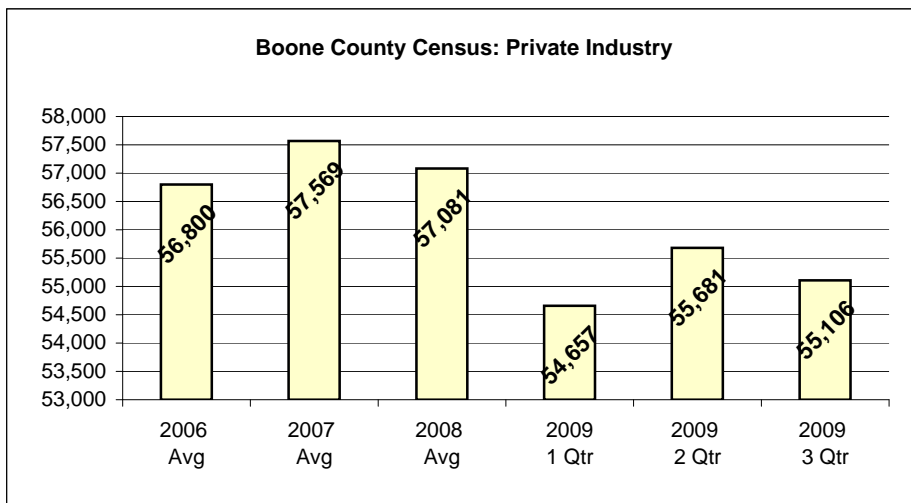
Source: MERIC (updated 7/20/10)

Columbia, MO MSA Industry	Number of Jobs			Net Change From	
	Jun-10	May-10	Jun-09	May-10	Jun-09
<b>Total Nonfarm</b>	90,100	92,900	89,400	-2,800	700
<b>Total Private</b>	60,300	60,100	60,600	200	-300
<b>Goods Producing</b>	7,300	7,200	7,400	100	-100
<b>Service-Providing</b>	82,800	85,700	82,000	-2,900	800
<b>Private Service Providing</b>	53,000	52,900	53,200	100	-200
<b>Trade</b>	15,500	15,400	15,400	100	100
<b>Retail Trade</b>	11,400	11,400	11,200	0	200
<b>Government</b>	29,800	32,800	28,800	-3,000	1,000
Federal Government	2,600	2,700	2,200	-100	400
State Government	19,700	22,900	19,200	-3,200	500
Local Government	7,500	7,200	7,400	300	100

Source: MERIC; with U.S. Dept of Labor, BLS (updated 7/20/10)

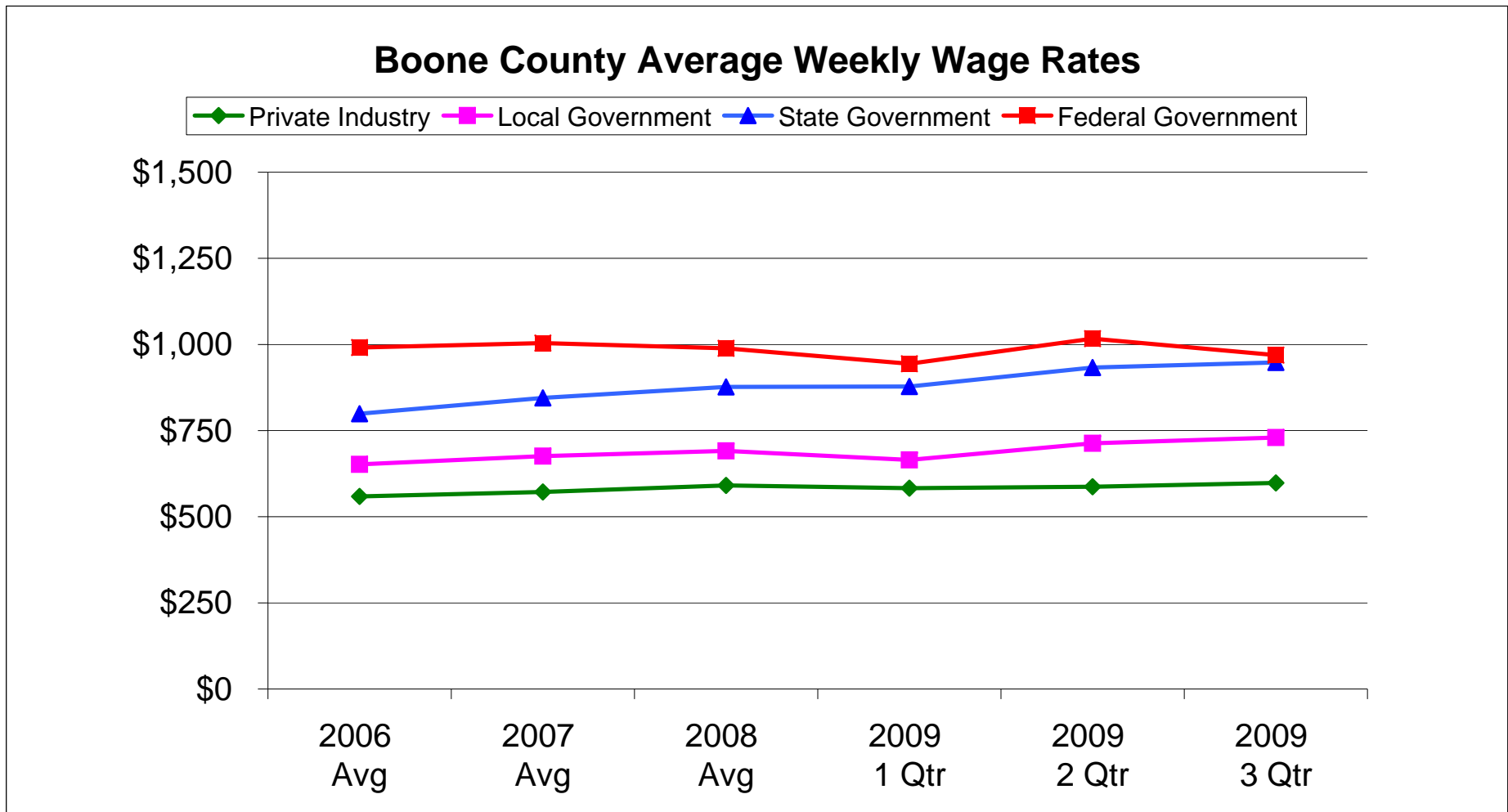
<b>BOONE COUNTY CENSUS OF EMPLOYMENT BY INDUSTRY</b>	<b>2006 Avg</b>	<b>2007 Avg</b>	<b>2008 Avg</b>	<b>2009 1 Qtr</b>	<b>2009 2 Qtr</b>	<b>2009 3 Qtr</b>	<b>2009 4 Qtr</b>
Private Industry	56,800	57,569	57,081	54,657	55,681	55,106	N/A
Local Government	6,218	6,350	6,472	6,545	6,709	6,024	N/A
State Government	16,715	16,628	16,943	16,862	16,832	16,659	N/A
Federal Government	1,975	2,012	2,092	2,039	2,192	2,234	N/A

\*Source: MERIC (updated 12/7/09)



<b>BOONE COUNTY AVERAGE WEEKLY WAGE RATES</b>	<b>2006 Avg</b>	<b>2007 Avg</b>	<b>2008 Avg</b>	<b>2009 1 Qtr</b>	<b>2009 2 Qtr</b>	<b>2009 3 Qtr</b>	<b>2009 4 Qtr</b>
Private Industry	\$559	\$572	\$591	\$583	\$587	\$598	N/A
Local Government	\$652	\$676	\$691	\$665	\$713	\$730	N/A
State Government	\$799	\$845	\$877	\$878	\$933	\$948	N/A
Federal Government	\$991	\$1,004	\$989	\$944	\$1,017	\$969	N/A

\*Source: MERIC (updated 12/7/09)



<b>AREA COUNTY AVERAGE WAGES (Effective Until)</b>	<b>07/01/06</b>	<b>07/01/07</b>	<b>07/01/08</b>	<b>07/01/09</b>	<b>07/01/10</b>
Boone	\$30,758	\$28,431	\$29,082	\$29,782	\$30,709
Cape Girardeau	\$28,994	\$29,458	\$30,444	\$32,337	\$31,939
Cole	\$30,884	\$31,239	\$32,221	\$33,056	\$34,391
Greene	\$30,493	\$30,914	\$31,529	\$32,569	\$33,571
Jackson	\$40,088	\$41,119	\$42,769	\$44,235	\$45,424
Phelps	\$27,495	\$25,116	\$25,603	\$26,799	\$27,357
Randolph	\$25,379	\$26,065	\$26,825	\$27,229	\$28,778
St Charles	\$34,088	\$35,256	\$36,148	\$37,237	\$37,137
Statewide Average	\$34,548	\$36,179	\$37,379	\$38,885	\$40,710

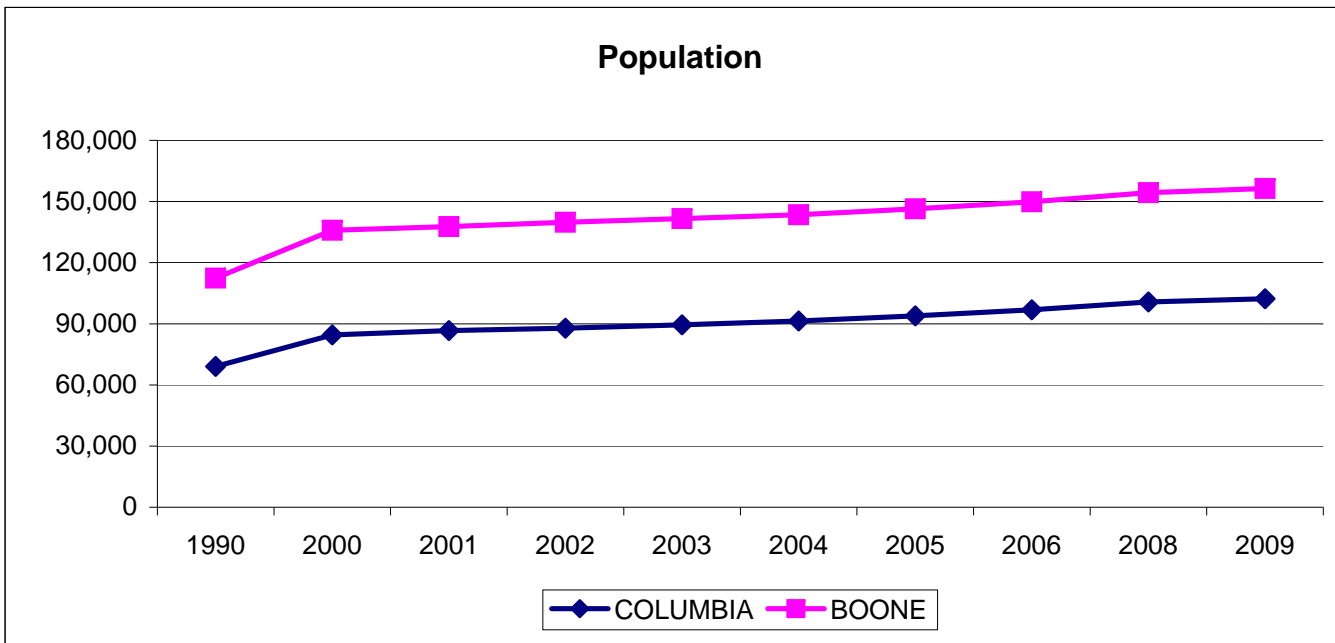
Source: MERIC; Missouri Quality Jobs Program (updated 7/1/09)

<b>COST OF LIVING</b>	<b>2007 Avg</b>	<b>2008 Avg</b>	<b>2009 Avg</b>
Ames, IA	96.8%	93.0%	96.6%
Atlanta, GA	96.1%	97.2%	94.2%
Austin, TX	94.5%	95.5%	96.5%
Chicago, IL	110.3%	112.5%	113.2%
<b>Columbia, MO</b>	<b>91.2%</b>	<b>91.0%</b>	<b>91.1%</b>
Denver, CO	103.4%	105.0%	102.9%
Hartford, CT	118.8%	123.1%	119.8%
Indianapolis, IN	94.7%	91.7%	88.8%
Kansas City, MO-KS	95.7%	96.8%	95.7%
Richmond, VA	106.4%	104.2%	106.7%
St. Louis, MO	91.5%	90.7%	89.5%
Tulsa, OK	91.6%	88.2%	87.4%

Source: ACCRA (updated 3/10/2010)

POPULATION	COLUMBIA	BOONE
1990	69,101	112,379
2000	84,531	135,846
2001	86,658	137,671
2002	87,872	139,782
2003	89,508	141,604
2004	91,364	143,516
2005	93,882	146,430
2006	96,851	149,823
2008	100,733	154,365
2009	102,324	156,377

[Source: US Census Bureau](#)



<b>HOUSEHOLD INCOME</b>	<b>BOONE COUNTY</b>	<b>CITY OF COLUMBIA</b>
2008 Median	\$47,077	\$40,326
2008 Mean	\$61,494	\$56,512
2006-2008 Median	\$45,723	\$41,184
2006-2008 Mean	\$60,975	\$56,483

<b>PER CAPITA INCOME</b>		
2008	\$25,404	\$23,998
2006-2008	\$25,398	\$24,146

Source: 2008; 2006-2008 American FactFinder; US Census Bureau (updated 1/26/2010)