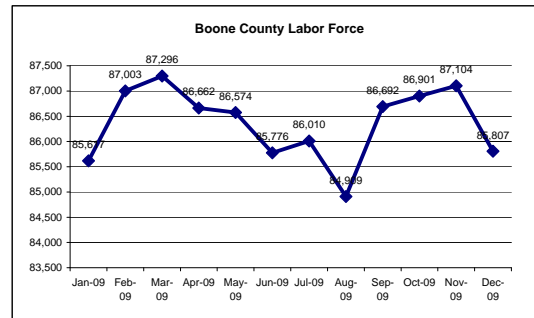
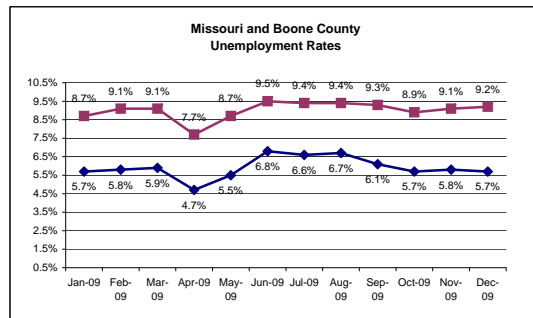


UNEMPLOYMENT	Jan-09	Feb-09	Mar-09	Apr-09	May-09	June-09	July-09	August-09	Sep-09	Oct-09	Nov-09	Dec-09	Avg 2009
Boone County	5.7%	5.8%	5.9%	4.7%	5.5%	6.8%	6.6%	6.7%	6.1%	5.7%	5.8%	5.7%	5.9%
Missouri	8.7%	9.1%	9.1%	7.7%	8.7%	9.5%	9.4%	9.4%	9.3%	8.9%	9.1%	9.2%	9.0%
United States	8.5%	8.9%	9.0%	8.6%	9.1%	9.7%	9.7%	9.6%	9.5%	9.5%	9.4%	9.7%	9.3%
Columbia (city)	6.7%	6.8%	7.0%	5.5%	6.5%	8.0%	7.8%	7.8%	7.2%	6.7%	6.8%	6.7%	6.9%
Columbia MSA	5.9%	6.0%	6.1%	4.8%	5.6%	6.9%	6.7%	6.7%	6.3%	5.8%	5.9%	5.8%	6.0%

LABOR FORCE	Jan-09	Feb-09	Mar-09	Apr-09	May-09	June-09	July-09	August-09	Sep-09	Oct-09	Nov-09	Dec-09	Avg 2009
Boone County	85,617	87,003	87,296	86,662	86,574	85,776	86,010	84,909	86,692	86,901	87,104	85,807	86,417
Missouri	2,986,742	3,002,178	3,008,798	3,001,482	3,015,033	3,052,668	3,048,058	3,015,197	3,001,456	2,993,714	2,982,202	2,958,153	3,003,802
United States	153,445,000	153,804,000	153,728,000	153,834,000	154,336,000	155,921,000	156,255,000	154,897,000	153,617,000	153,635,000	153,539,000	152,693,000	154,069,571
Columbia (city)	52,739	53,602	53,795	53,277	53,309	52,942	53,068	52,395	53,444	53,530	53,658	52,851	53,248
Columbia MSA	90,773	92,213	92,504	91,798	91,720	90,891	91,150	89,949	91,852	92,066	92,284	90,909	91,564

Source: MERIC (updated 1/26/2010)

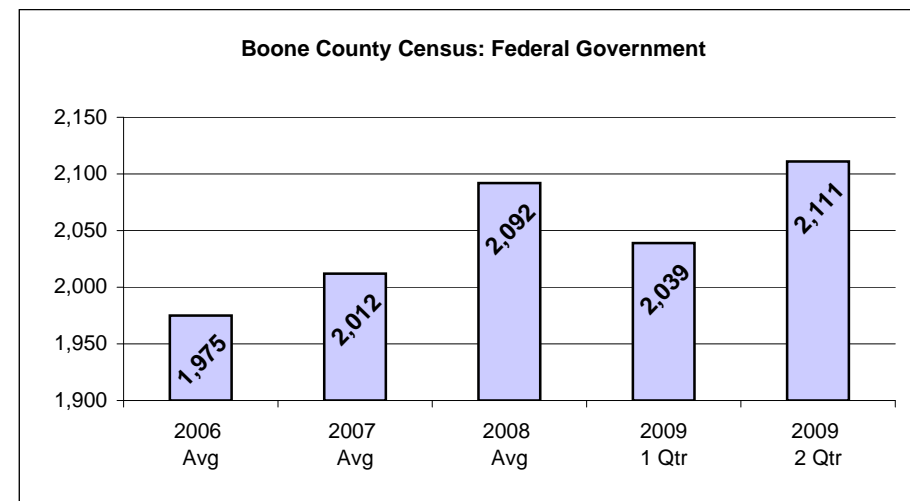
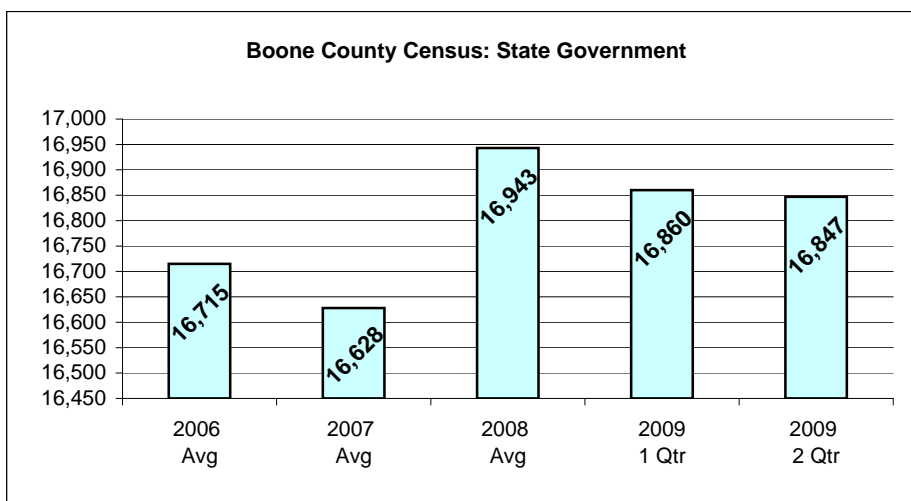
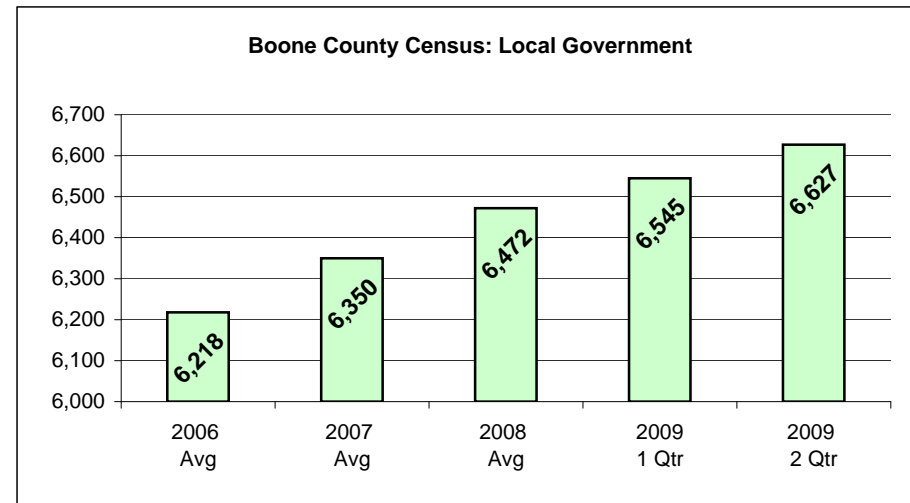
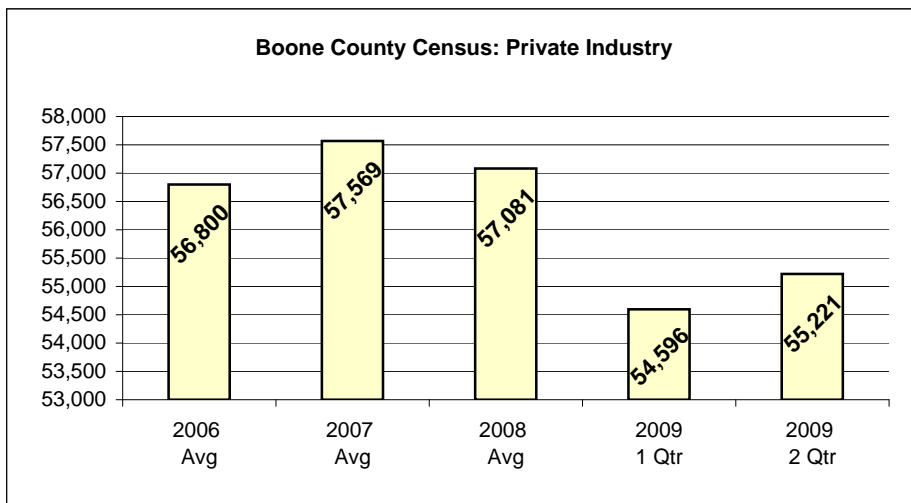


Columbia, MO MSA Industry	Number of Jobs			Net Change From	
	Dec-09	Nov-09	Dec-08	Nov-09	Dec-08
Total Nonfarm	93,800	94,700	94,700	-900	-900
Total Private	61,800	62,500	62,700	-700	-900
Goods Producing	7,500	7,700	8,300	-200	-800
Service-Providing	86,300	87,000	86,400	-700	-100
Private Service Providing	54,300	54,800	54,400	-500	-100
Trade	15,000	15,000	15,300	0	-300
Retail Trade	10,800	10,900	10,800	-100	0
Government	32,000	32,200	32,000	-200	0
Federal Government	2,300	2,300	2,300	0	0
State Government	23,000	23,100	22,900	-100	100
Local Government	6,700	6,800	6,800	-100	-100

Source: MERIC; with U.S. Dept of Labor, BLS (updated 1/26/2010)

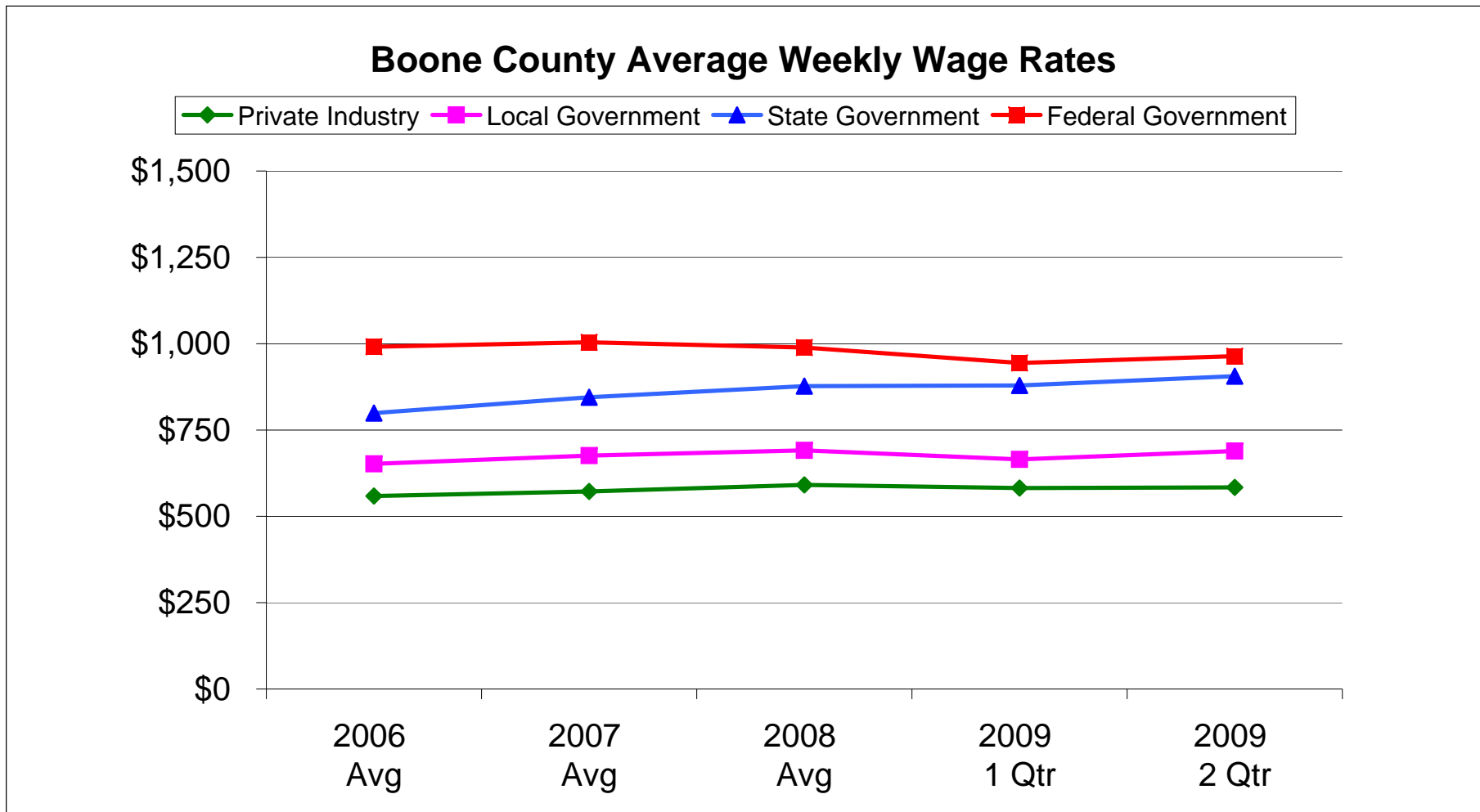
BOONE COUNTY CENSUS OF EMPLOYMENT BY INDUSTRY	2006 Avg	2007 Avg	2008 Avg	2009 1 Qtr	2009 2 Qtr	2009 3 Qtr	2009 4 Qtr
Private Industry	56,800	57,569	57,081	54,596	55,221	N/A	N/A
Local Government	6,218	6,350	6,472	6,545	6,627	N/A	N/A
State Government	16,715	16,628	16,943	16,860	16,847	N/A	N/A
Federal Government	1,975	2,012	2,092	2,039	2,111	N/A	N/A

*Source: MERIC (updated 12/7/09)



BOONE COUNTY AVERAGE WEEKLY WAGE RATES	2006 Avg	2007 Avg	2008 Avg	2009 1 Qtr	2009 2 Qtr	2009 3 Qtr	2009 4 Qtr
Private Industry	\$559	\$572	\$591	\$582	\$584	N/A	N/A
Local Government	\$652	\$676	\$691	\$665	\$689	N/A	N/A
State Government	\$799	\$845	\$877	\$879	\$906	N/A	N/A
Federal Government	\$991	\$1,004	\$989	\$944	\$964	N/A	N/A

*Source: MERIC (updated 12/7/09)



AREA COUNTY AVERAGE WAGES (Effective Until)	07/01/06	07/01/07	07/01/08	07/01/09	07/01/10
Boone	\$30,758	\$28,431	\$29,082	\$29,782	\$30,709
Cape Girardeau	\$28,994	\$29,458	\$30,444	\$32,337	\$31,939
Cole	\$30,884	\$31,239	\$32,221	\$33,056	\$34,391
Greene	\$30,493	\$30,914	\$31,529	\$32,569	\$33,571
Jackson	\$40,088	\$41,119	\$42,769	\$44,235	\$45,424
Phelps	\$27,495	\$25,116	\$25,603	\$26,799	\$27,357
Randolph	\$25,379	\$26,065	\$26,825	\$27,229	\$28,778
St Charles	\$34,088	\$35,256	\$36,148	\$37,237	\$37,137
Statewide Average	\$34,548	\$36,179	\$37,379	\$38,885	\$40,710

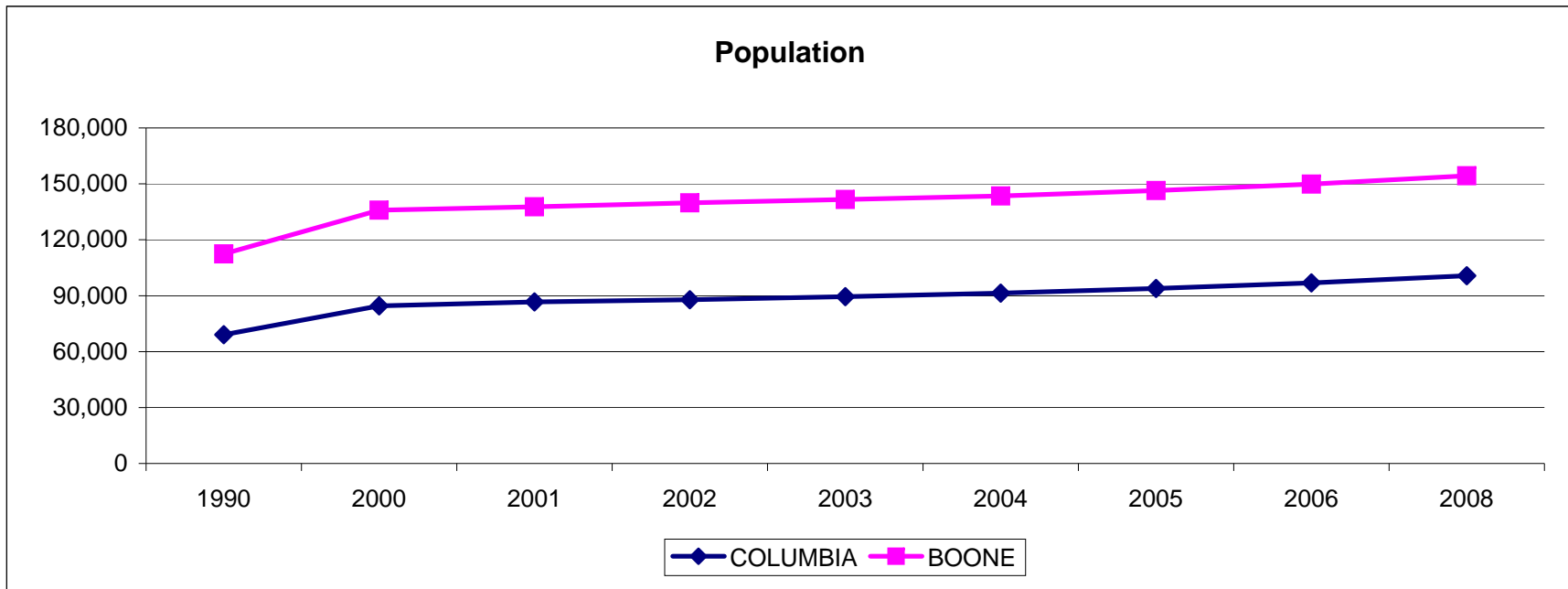
Source: MERIC; Missouri Quality Jobs Program (updated 7/1/09)

COST OF LIVING	2007 Avg	2008 Avg	2009 1 Qtr	2009 2 Qtr	2009 3 Qtr
Ames, IA	96.8%	93.0%	97.7%	97.1%	95.7%
Atlanta, GA	96.1%	97.2%	94.9%	93.2%	95.4%
Austin, TX	94.5%	95.5%	94.9%	96.6%	96.8%
Chicago, IL	110.3%	112.5%	113.5%	112.2%	112.3%
Columbia, MO	91.2%	91.0%	91.0%	91.7%	90.6%
Denver, CO	103.4%	105.0%	101.9%	104.1%	104.3%
Hartford, CT	118.8%	123.1%	119.2%	119.2%	120.6%
Indianapolis, IN	94.7%	91.7%	88.7%	89.1%	87.6%
Kansas City, MO-KS	95.7%	96.8%	95.5%	96.0%	96.3%
Richmond, VA	106.4%	104.2%	105.3%	107.2%	106.6%
St. Louis, MO	91.5%	90.7%	87.6%	89.8%	89.8%
Tulsa, OK	91.6%	88.2%	87.1%	87.5%	87.0%

Source: ACCRA (updated 11/5/2009)

POPULATION	COLUMBIA	BOONE
1990	69,101	112,379
2000	84,531	135,846
2001	86,658	137,671
2002	87,872	139,782
2003	89,508	141,604
2004	91,364	143,516
2005	93,882	146,430
2006	96,851	149,823
2008	100,733	154,365

Source: [US Census Bureau](#)



HOUSEHOLD INCOME	BOONE COUNTY	CITY OF COLUMBIA
2008 Median	\$47,077	\$40,326
2008 Mean	\$61,494	\$56,512
2006-2008 Median	\$45,723	\$41,184
2006-2008 Mean	\$60,975	\$56,483

PER CAPITA INCOME		
2008	\$25,404	\$23,998
2006-2008	\$25,398	\$24,146

Source: 2008; 2006-2008 American FactFinder; US Census Bureau (updated 1/26/2010)