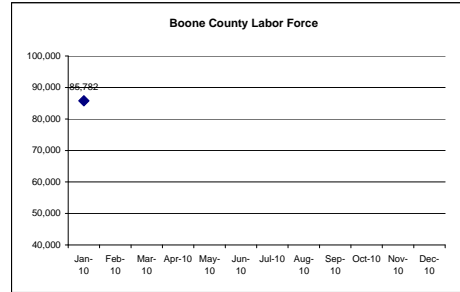
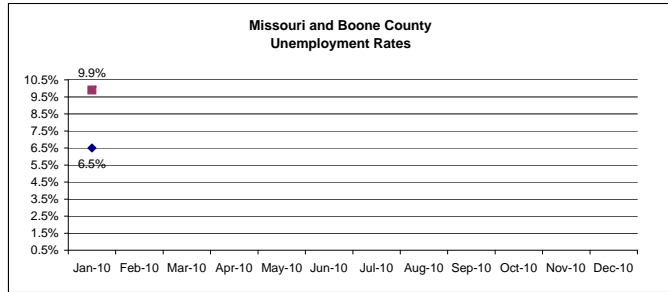


UNEMPLOYMENT	Avg 2008	Avg 2009	Jan-10	Feb-10	Mar-10	Apr-10	May-10	Jun-10	Jul-10	Aug-10	Sep-10	Oct-10	Nov-10	Dec-10	Avg 2010
United States	5.7%	9.3%	10.6%												
Missouri	6.1%	9.3%	9.9%												
Boone County	4.3%	6.3%	6.5%												
Columbia (city)	5.1%	5.6%	5.7%												
Columbia MSA	4.4%	6.4%	6.7%												

LABOR FORCE	Jan-10	Avg 2009	Jan-10	Feb-10	Mar-10	Apr-10	May-10	Jun-10	Jul-10	Aug-10	Sep-10	Oct-10	Nov-10	Dec-10	Avg 2010
United States	154,369,667	154,069,571	152,957,000												
Missouri	3,012,126	3,036,622	2,968,388												
Boone County	86,437	87,568	85,782												
Columbia (city)	53,099	56,813	55,562												
Columbia MSA	91,558	92,747	90,863												

Source: MERIC (updated 3/10/2010)

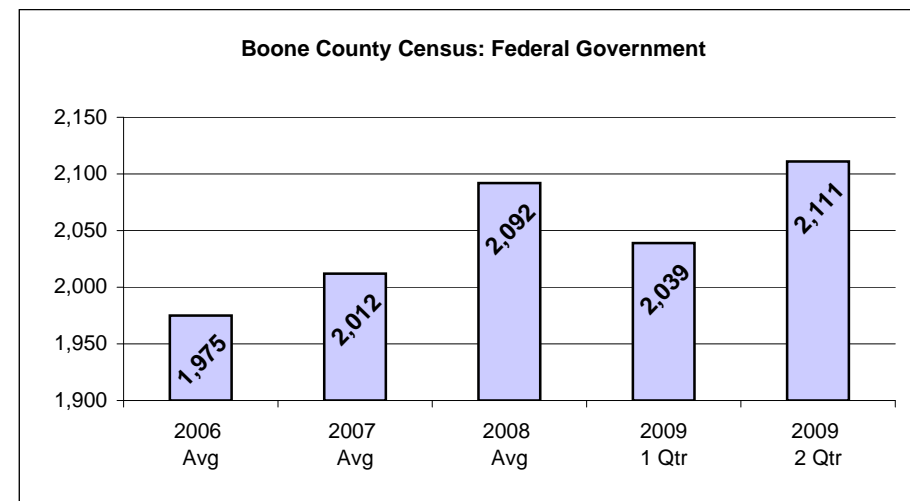
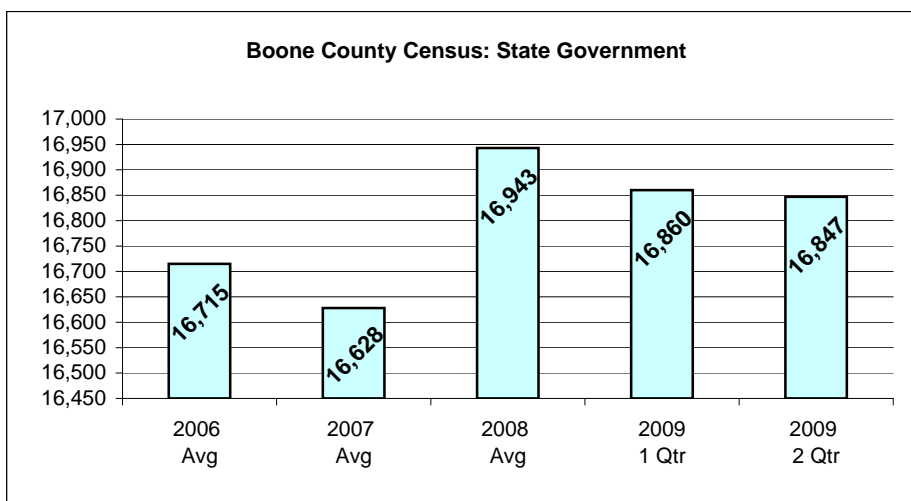
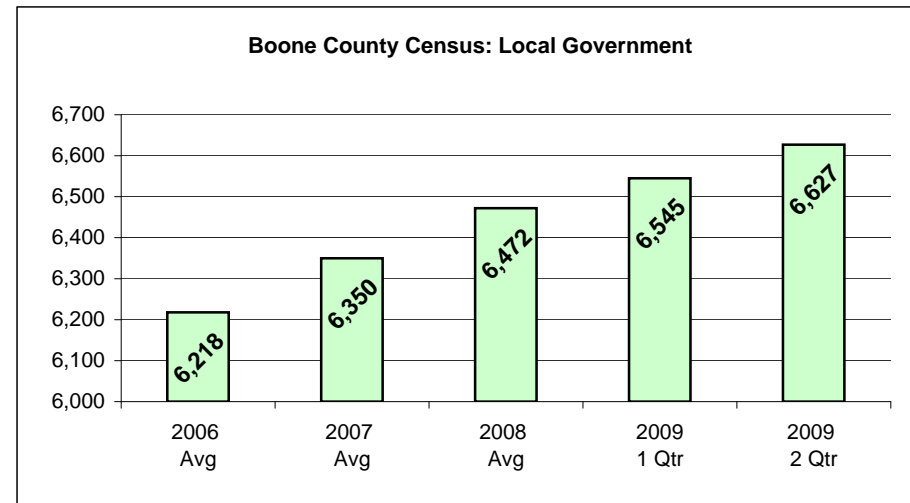
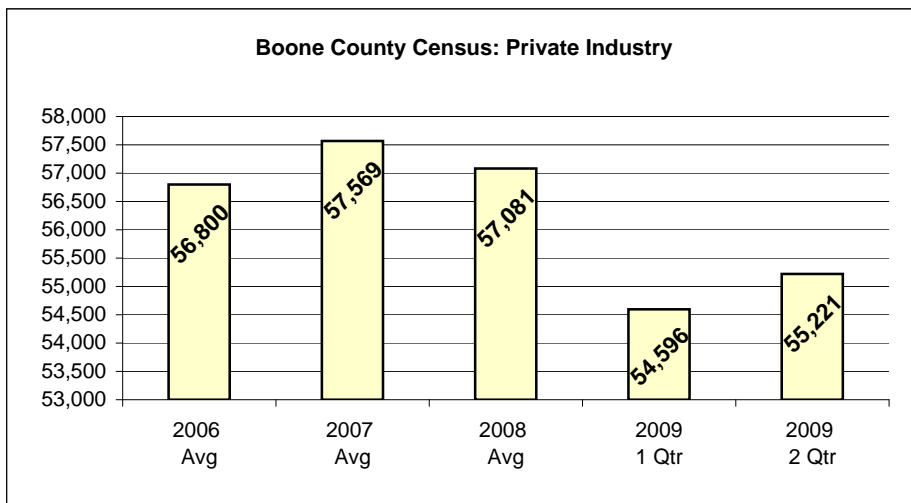


<b>Columbia, MO MSA Industry</b>	<b>Number of Jobs</b>			<b>Net Change From</b>	
	<b>Jan-10</b>	<b>Dec-09</b>	<b>Jan-09</b>	<b>Dec-09</b>	<b>Jan-09</b>
<b>Total Nonfarm</b>	88,400	92,500	89,900	-4,100	-1,500
<b>Total Private</b>	58,500	60,500	59,600	-2,000	-1,100
<b>Goods Producing</b>	6,900	6,900	7,300	0	-400
<b>Service-Providing</b>	81,500	85,600	82,600	-4,100	-1,100
<b>Private Service Providing</b>	51,600	53,600	52,300	-2,000	-700
<b>Trade</b>	15,100	15,600	15,100	-500	0
<b>Retail Trade</b>	11,100	11,600	10,900	-500	200
<b>Government</b>	29,900	32,000	30,300	-2,100	-400
Federal Government	2,300	2,300	2,100	0	200
State Government	20,700	22,800	21,300	-2,100	-600
Local Government	6,900	6,900	6,900	0	0

Source: MERIC; with U.S. Dept of Labor, BLS (updated 3/10/2010)

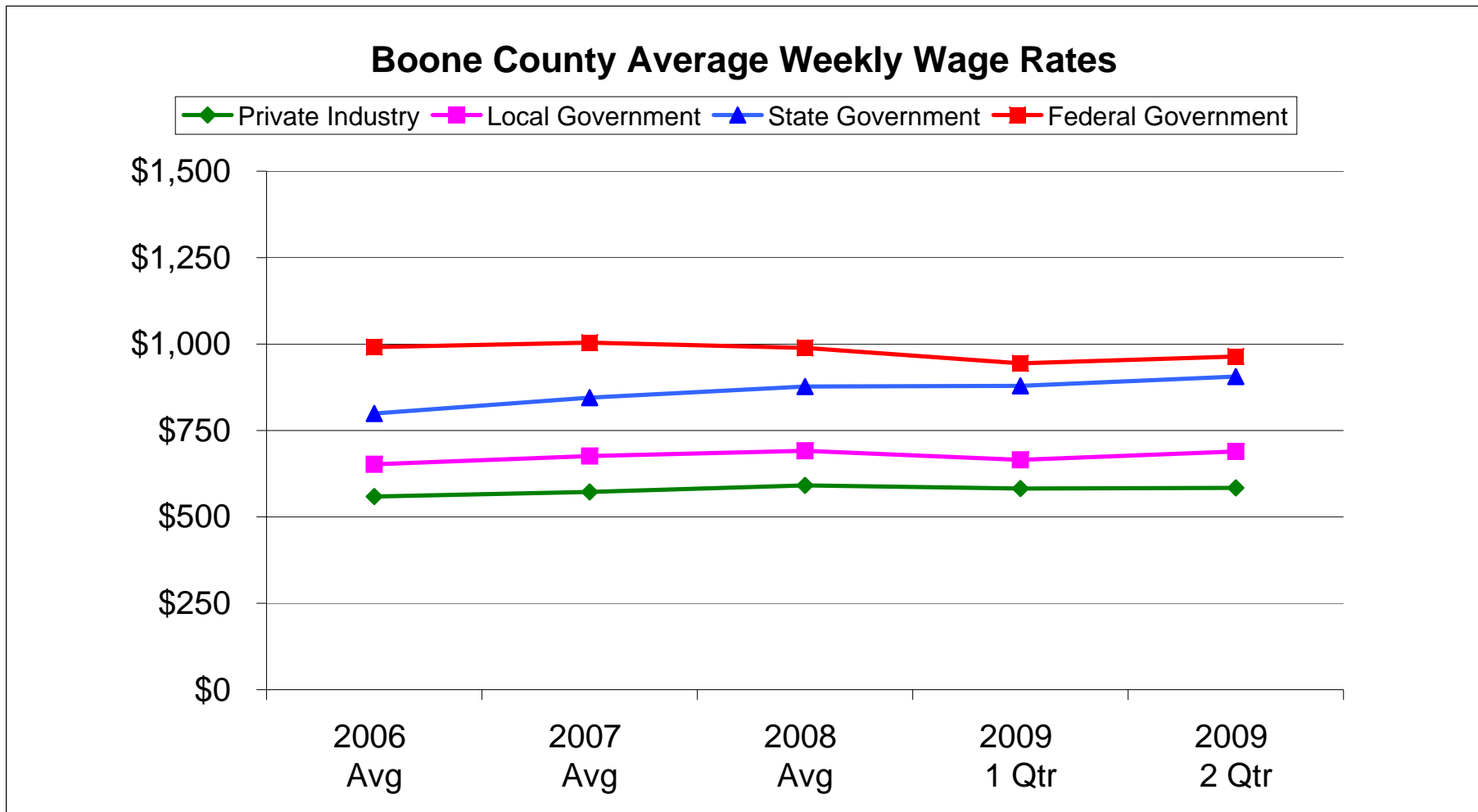
<b>BOONE COUNTY CENSUS OF EMPLOYMENT BY INDUSTRY</b>	<b>2006 Avg</b>	<b>2007 Avg</b>	<b>2008 Avg</b>	<b>2009 1 Qtr</b>	<b>2009 2 Qtr</b>	<b>2009 3 Qtr</b>	<b>2009 4 Qtr</b>
Private Industry	56,800	57,569	57,081	54,596	55,221	N/A	N/A
Local Government	6,218	6,350	6,472	6,545	6,627	N/A	N/A
State Government	16,715	16,628	16,943	16,860	16,847	N/A	N/A
Federal Government	1,975	2,012	2,092	2,039	2,111	N/A	N/A

\*Source: MERIC (updated 12/7/09)



<b>BOONE COUNTY AVERAGE WEEKLY WAGE RATES</b>	<b>2006 Avg</b>	<b>2007 Avg</b>	<b>2008 Avg</b>	<b>2009 1 Qtr</b>	<b>2009 2 Qtr</b>	<b>2009 3 Qtr</b>	<b>2009 4 Qtr</b>
Private Industry	\$559	\$572	\$591	\$582	\$584	N/A	N/A
Local Government	\$652	\$676	\$691	\$665	\$689	N/A	N/A
State Government	\$799	\$845	\$877	\$879	\$906	N/A	N/A
Federal Government	\$991	\$1,004	\$989	\$944	\$964	N/A	N/A

\*Source: MERIC (updated 12/7/09)



<b>AREA COUNTY AVERAGE WAGES (Effective Until)</b>	<b>07/01/06</b>	<b>07/01/07</b>	<b>07/01/08</b>	<b>07/01/09</b>	<b>07/01/10</b>
Boone	\$30,758	\$28,431	\$29,082	\$29,782	\$30,709
Cape Girardeau	\$28,994	\$29,458	\$30,444	\$32,337	\$31,939
Cole	\$30,884	\$31,239	\$32,221	\$33,056	\$34,391
Greene	\$30,493	\$30,914	\$31,529	\$32,569	\$33,571
Jackson	\$40,088	\$41,119	\$42,769	\$44,235	\$45,424
Phelps	\$27,495	\$25,116	\$25,603	\$26,799	\$27,357
Randolph	\$25,379	\$26,065	\$26,825	\$27,229	\$28,778
St Charles	\$34,088	\$35,256	\$36,148	\$37,237	\$37,137
Statewide Average	\$34,548	\$36,179	\$37,379	\$38,885	\$40,710

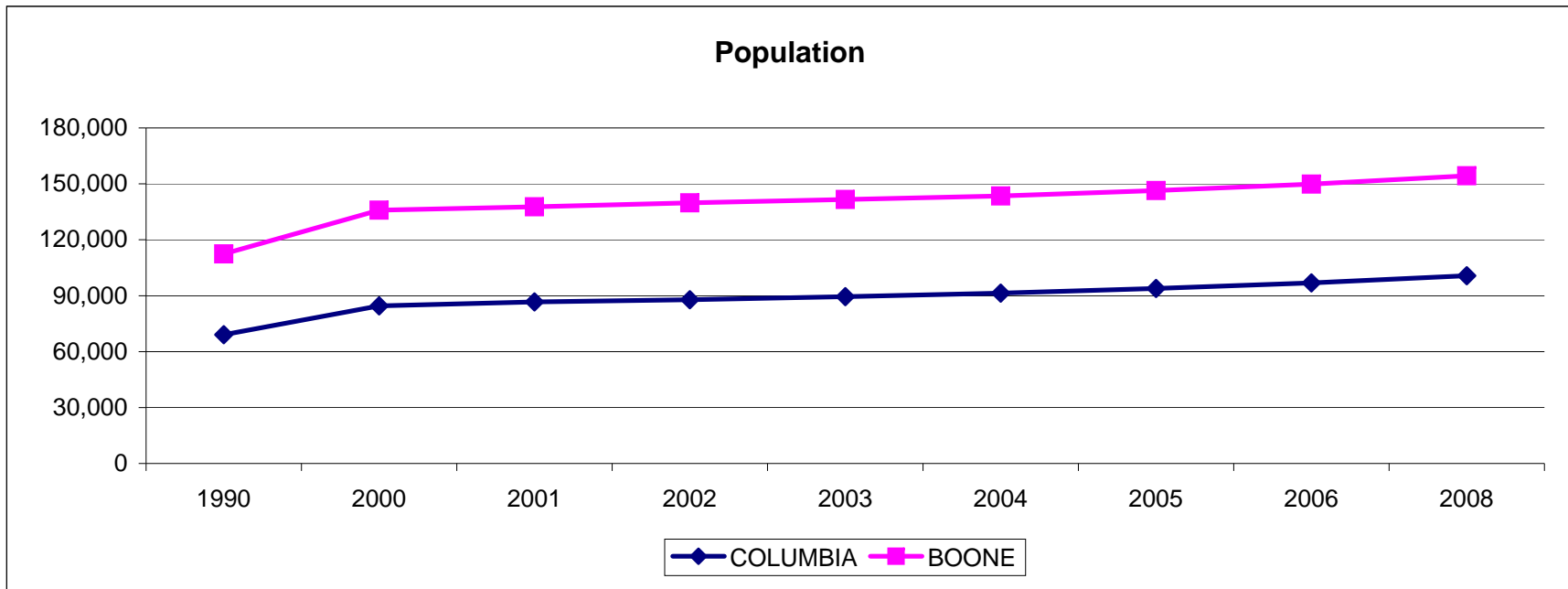
Source: MERIC; Missouri Quality Jobs Program (updated 7/1/09)

<b>COST OF LIVING</b>	<b>2007 Avg</b>	<b>2008 Avg</b>	<b>2009 Avg</b>
Ames, IA	96.8%	93.0%	96.6%
Atlanta, GA	96.1%	97.2%	94.2%
Austin, TX	94.5%	95.5%	96.5%
Chicago, IL	110.3%	112.5%	113.2%
<b>Columbia, MO</b>	<b>91.2%</b>	<b>91.0%</b>	<b>91.1%</b>
Denver, CO	103.4%	105.0%	102.9%
Hartford, CT	118.8%	123.1%	119.8%
Indianapolis, IN	94.7%	91.7%	88.8%
Kansas City, MO-KS	95.7%	96.8%	95.7%
Richmond, VA	106.4%	104.2%	106.7%
St. Louis, MO	91.5%	90.7%	89.5%
Tulsa, OK	91.6%	88.2%	87.4%

Source: ACCRA (updated 3/10/2010)

POPULATION	COLUMBIA	BOONE
1990	69,101	112,379
2000	84,531	135,846
2001	86,658	137,671
2002	87,872	139,782
2003	89,508	141,604
2004	91,364	143,516
2005	93,882	146,430
2006	96,851	149,823
2008	100,733	154,365

Source: [US Census Bureau](#)



<b>HOUSEHOLD INCOME</b>	<b>BOONE COUNTY</b>	<b>CITY OF COLUMBIA</b>
2008 Median	\$47,077	\$40,326
2008 Mean	\$61,494	\$56,512
2006-2008 Median	\$45,723	\$41,184
2006-2008 Mean	\$60,975	\$56,483

<b>PER CAPITA INCOME</b>		
2008	\$25,404	\$23,998
2006-2008	\$25,398	\$24,146

Source: 2008; 2006-2008 American FactFinder; US Census Bureau (updated 1/26/2010)